

CK-13-AC Medium Intensity Aviation Obstruction Light type AC



Application

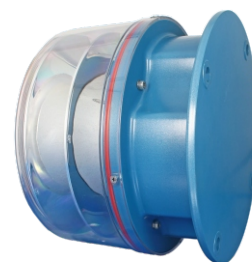
Widely used in various fields of the Air Force, civilian airports and obstacle free airspace, helipads, high structures, telecommunication towers heliport, electrical transmission lines or towers, chimneys, ports, wind turbines, bridge and city high-rise buildings where there are more visible to

Key Feature

- Lamp shade of the light adopts PC with anti-UV which is high efficiency light transmission up to 95%, quite high impact resistance and fits the bad environment very well.
- House of the light is made of aluminum alloy, painted by spraying plastics, the structure is high strength, resistance to corrosion;
- Using parabolic reflector optical design, range further;
- Light source adopts LED with long lifespan, lower power consumption and high efficiency.
- Based on the single chip computer control, automatic identification sync signal, do not distinguish the main light and auxiliary light, and also could be controlled by the controller;
- Same power supply voltage with synchronous signal, integrate in power supply cable, eliminate the damage by error installation caused;
- Used the photosensitive probe fit for the natural light spectrum curve, automatic control light intensity level;
- The circuit of the light has surge protection whose lightning proof ability is In 7.5KA/5times, Imax 15KA so that the light is suitable for a harsh environment;
- Integral structure, protection level of IP65;
- Ignitability rate UL-94V0, fit for all kinds of industrial situation;
- GPS synchronizing function is available.



Main photo



Bottom



Top

Parameter

Item	Parameter
Standard	FAA/ICAO Standard
Model	CK-13-AC
Operating voltage	AC220V/DC24V/DC48V (Other available)
Power consumption	≤28W(day)/≤8W(night)
Flashing frequency	20~60times/min(White), Steady(Red)
Light source	White/ Red LED
Peak light intensity	>20000cd(White)/2000(Red)
Lifespan	>100,000hours
Emitting color	White/Red
Beam angle	360° horizontal beam angle ≥3° vertical beam spread
Method of synchronization	GPS
Overall size(mm)	Φ268mm×206mm
Installation size(mm)	166mm×166 mm -4×M10
Ingress protection	Ip65
Lightning protection level	15KA
Background Luminance	<50 / 50~500 / >500 (cd/m²)
Operating temperature	-40°C ~ 55°C
Net weight	6.1kg
Wind load	240km/h

Structure chart

